

PPV Series

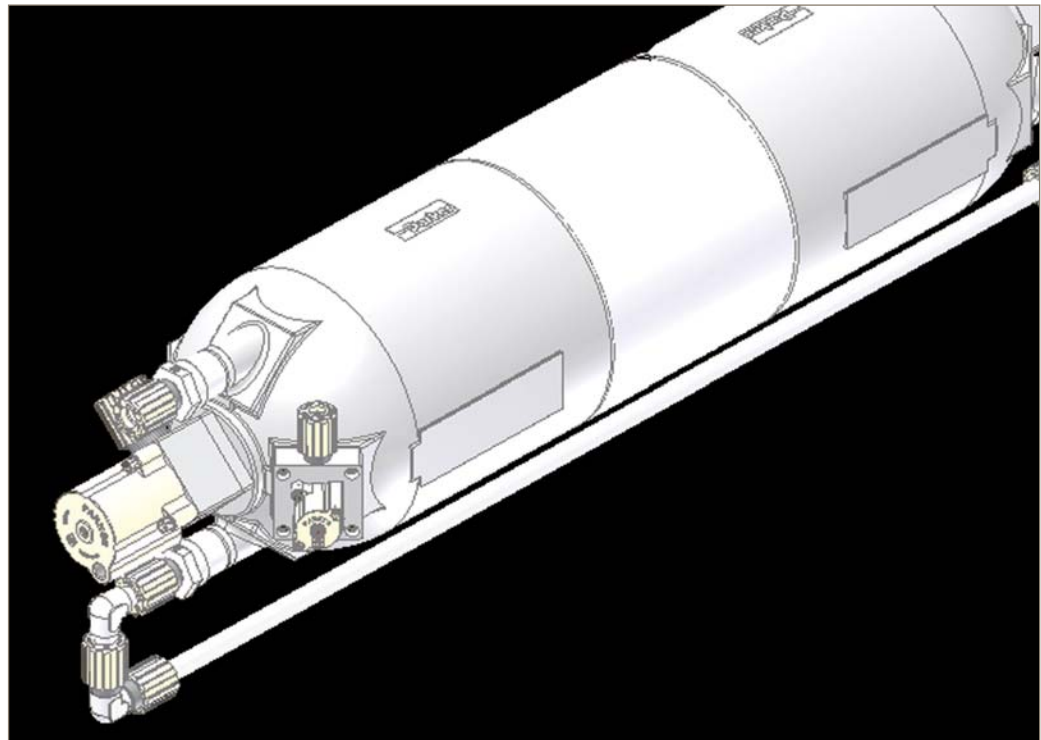
6" Diameter PFA Custom Pressure Vessels
Patent Pending

aerospace
climate control
electromechanical
filtration
fluid & gas handling
hydraulics
pneumatics
process control
sealing & shielding

Custom is Now Standard:

The Partek PFA Pressure Vessels are modular in design allowing for high levels of customization for chemical delivery systems. Our unique design provides 10 interface connection points plus 4 flat side pads for level sensings and vessel stabilizing.

Interface connection points can have fittings or valves attached directly or simply be used as a support base for the vessel. This design allows customers to adapt to their system requirements, reduce total part count, eliminate potential leak points, and minimize inventories.



Contact Information:

Parker Hannifin Corporation
Veriflo Division
Partek Operation
7075 East Southpoint Road
Tucson, AZ 85756

phone 520 574 2600
fax 520 574 2700
www.parker.com/partek

Product Features:

- Developed for use in dispensing chemical delivery systems utilizing vacuum/pressurization techniques.
- 10 interface points allow valves and fittings to be connected directly to the vessel which reduces space and eliminates leak points.
- Modular design with standard components provides easy customization, shorter deliveries, minimizes inventories, reduced part count and improves system efficiency.
- 4 side interface points for level sensors and vessel stabilizing which enhances overall vessel functionality.
- Automated weld assembly process ensures high integrity fusible joints and weld uniformity.



ENGINEERING YOUR SUCCESS.

PPV Series

6" Diameter PFA Custom Pressure Vessels

Materials of Construction

Wetted Materials	PFA, Modified PTFE, PTFE
Non-Wetted Materials	PFA, PVDF, Viton, PVDF Coated SS Spring, Natural Polypro
Pipe Outside Diameter	6.60 inches (167.64 mm)
Pipe Wall Thickness	0.32 inches (8.13 mm)
Interface Points	14 maximum with 5 on top, 5 on bottom, and 4 on sides
Port Connections	Accommodates 20 Series Valves, Dip Tube, Parbond, Parflare and Pillar Fittings

Pressure Ranges

Maximum Pressure	80 PSIG (5.5 bar) at 77°F (25°C)
Maximum Vacuum	25" HG (913 mbar) at 77°F (25°C)
Proof Pressure	120 PSIG (8.3 bar) at 77°F (25°C)
Valve Actuation Pressure	70 - 120 PSIG (4.8 - 8.3 bar)

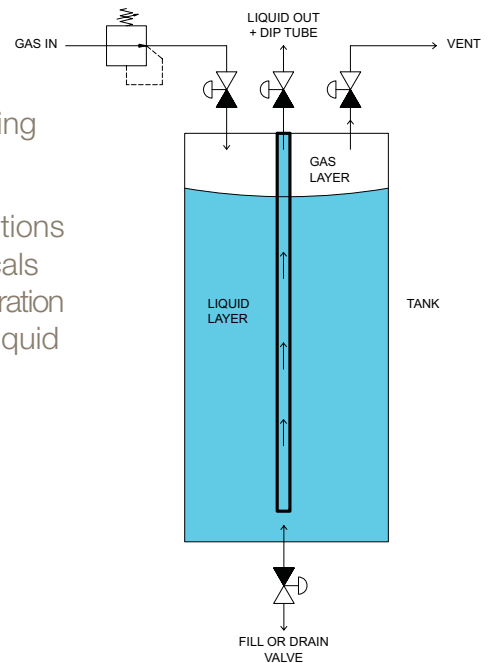
Temperature Ranges

Ambient Temperature	59° - 77°F (15° - 25°C)
Media Temperature	59° - 203°F (15° - 95°C)

How It Works

Pure gas is applied to the cylinder to push the liquid through the system. The pressurized cylinder performs like a pump. This type of liquid dispense has the following advantages:

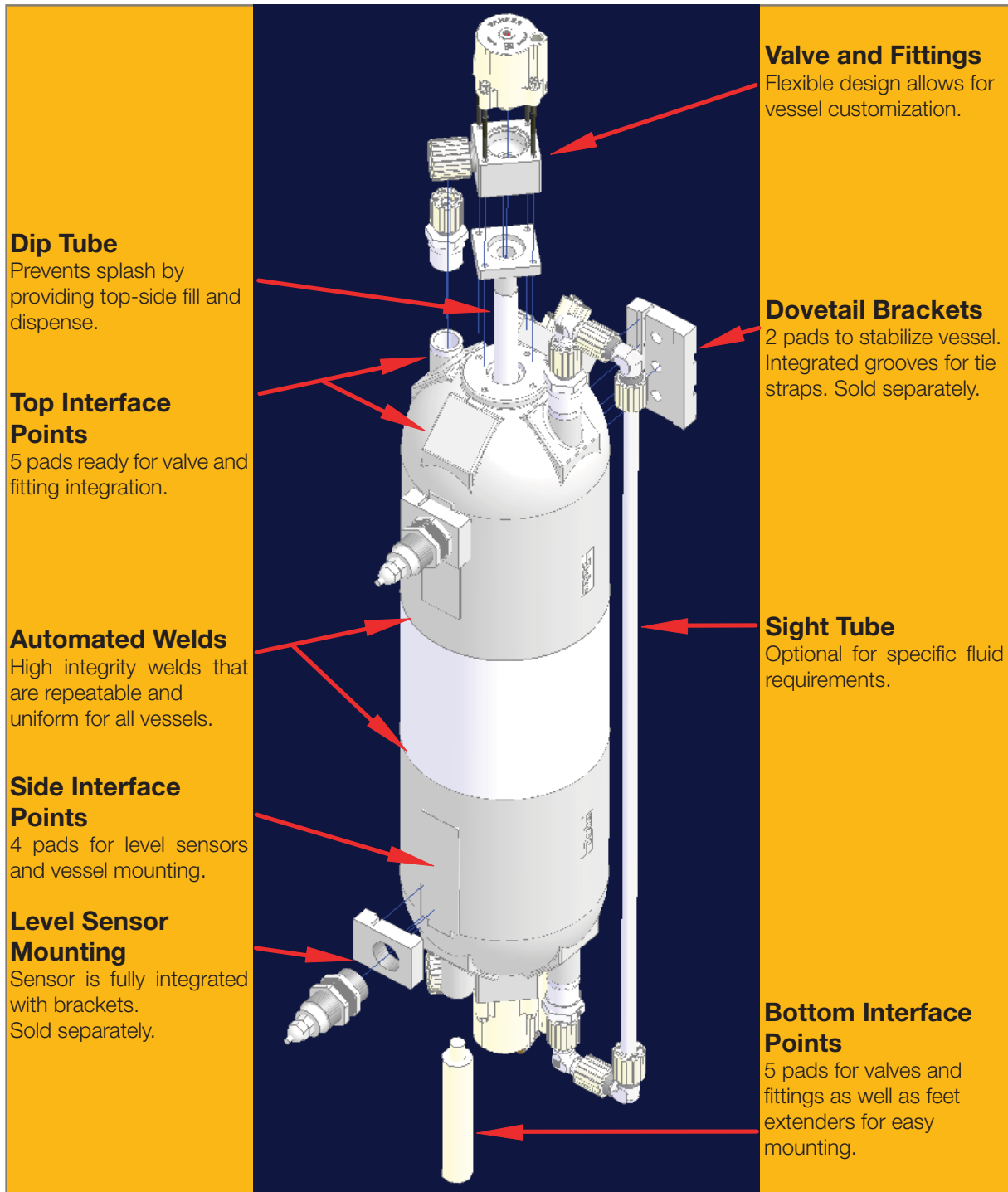
- No pulsation
- Stable pressurized liquid dispensing
- No chemical shearing
- Good for slurry delivery
- No electrical connections needed near chemicals
- Reduced particle generation
- No moving parts in liquid
- Long term durability



PPV Series

6" Diameter PFA Custom Pressure Vessels

Features and Accessories

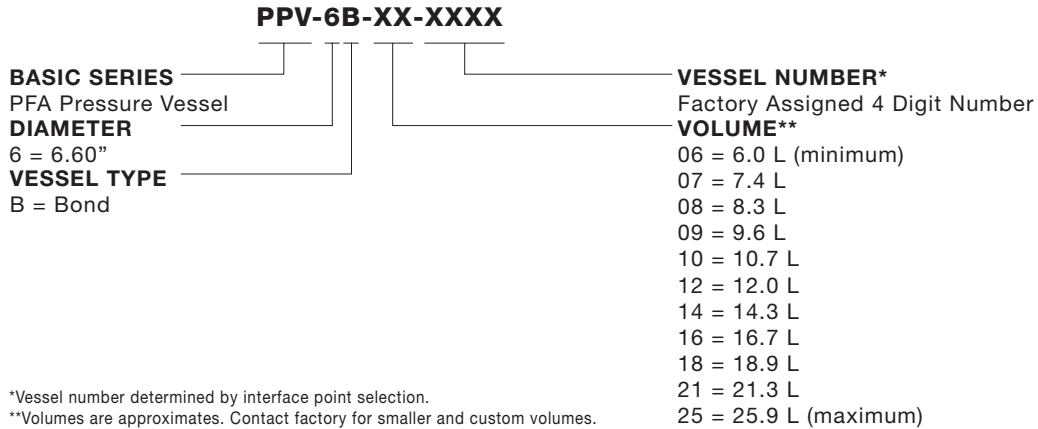


PPV Series

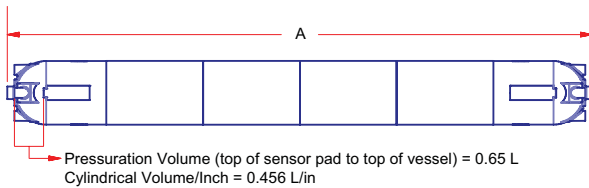
6" Diameter PFA Custom Pressure Vessels

Part Number Matrix

Due to the potential variety of overall configurations, each pressure vessel is handled as a custom assembly. Please contact factory for ordering information.



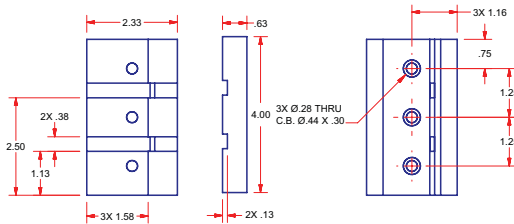
Reference Vessel Dimensions



Part Number*	Approx. Vol.	Dimension A
PPV-6B-06-XXXX	6.0 L	17.9"
PPV-6B-07-XXXX	7.4 L	20.8"
PPV-6B-08-XXXX	8.3 L	22.9"
PPV-6B-09-XXXX	9.6 L	25.8"
PPV-6B-10-XXXX	10.7 L	28.1"
PPV-6B-12-XXXX	12.0 L	31.0"
PPV-6B-14-XXXX	14.3 L	36.0"
PPV-6B-16-XXXX	16.7 L	41.2"
PPV-6B-18-XXXX	18.9 L	46.2"
PPV-6B-21-XXXX	21.3 L	51.4"
PPV-6B-25-XXXX	25.9 L	62.4"

*Part number is not complete. Please contact factory for ordering information.

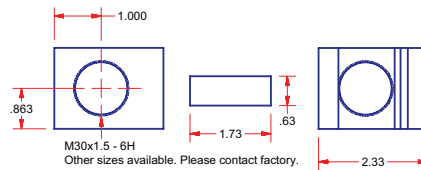
Vertical Dovetail Bracket



Part Number***

VDB-6B-1
***Vertical dovetail bracket is only intended to stabilize the vessel. It is not intended to support the weight of the vessel.

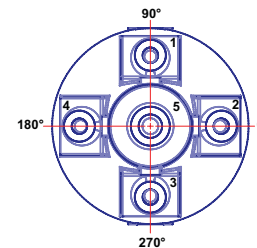
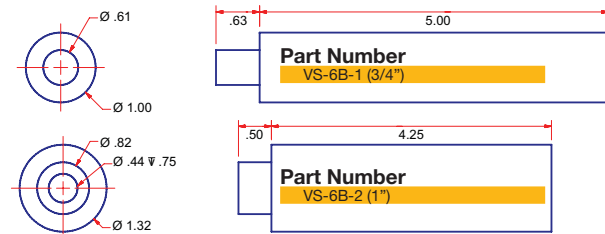
Sensor Bracket



Part Number

VSB-6B-1 (no sensor)
VSB-6B-1-S1 (w/ Turk PNP Sensor, #BC10-PT30-VP4X2)
VSB-6B-1-S2 (w/ Turk NPN Sensor, #BC10-PT30-VN4X2)

Bottom Base Supports



Note:
VS-6B-1 is for pads #1 - 4.
VS-6B-2 is for pad #5 only.

